



Member Forum

No. 183

Wednesday 10th May 2023
Kooyong Lawn Tennis Centre
Glenferrie Road, Kooyong

CONNECTING PEOPLE

SEEKING INNOVATION &
CONTINUOUS IMPROVEMENT

SHARING KNOWLEDGE & IDEAS

ADVOCATING FOR OUR PROFESSION

Wominjeka (Welcome)

Acknowledgment of Country

In the continued spirit of reconciliation, the Association of Land Development Engineers acknowledges the Traditional Custodians of country throughout Australia and their connections to land, sea and community. We pay our respect to their Elders past and present and extend that respect to all Aboriginal and Torres Strait Islander peoples today.



ALDE Executive Committee 2022/23



Sehon Pellew
President



Rodney Jackson
Immediate Past President



Mark Fleming
Secretary



Gordon Templeton
Treasurer



Karen Leoncelli
Executive Officer

ORDINARY MEMBERS:



Anthony
Grodzki



Quok-
yeong Ho



Adam
King



David
Cameron



Tony
Ilijoski



Anthony
O'Dwyer



Chris
Cathcart



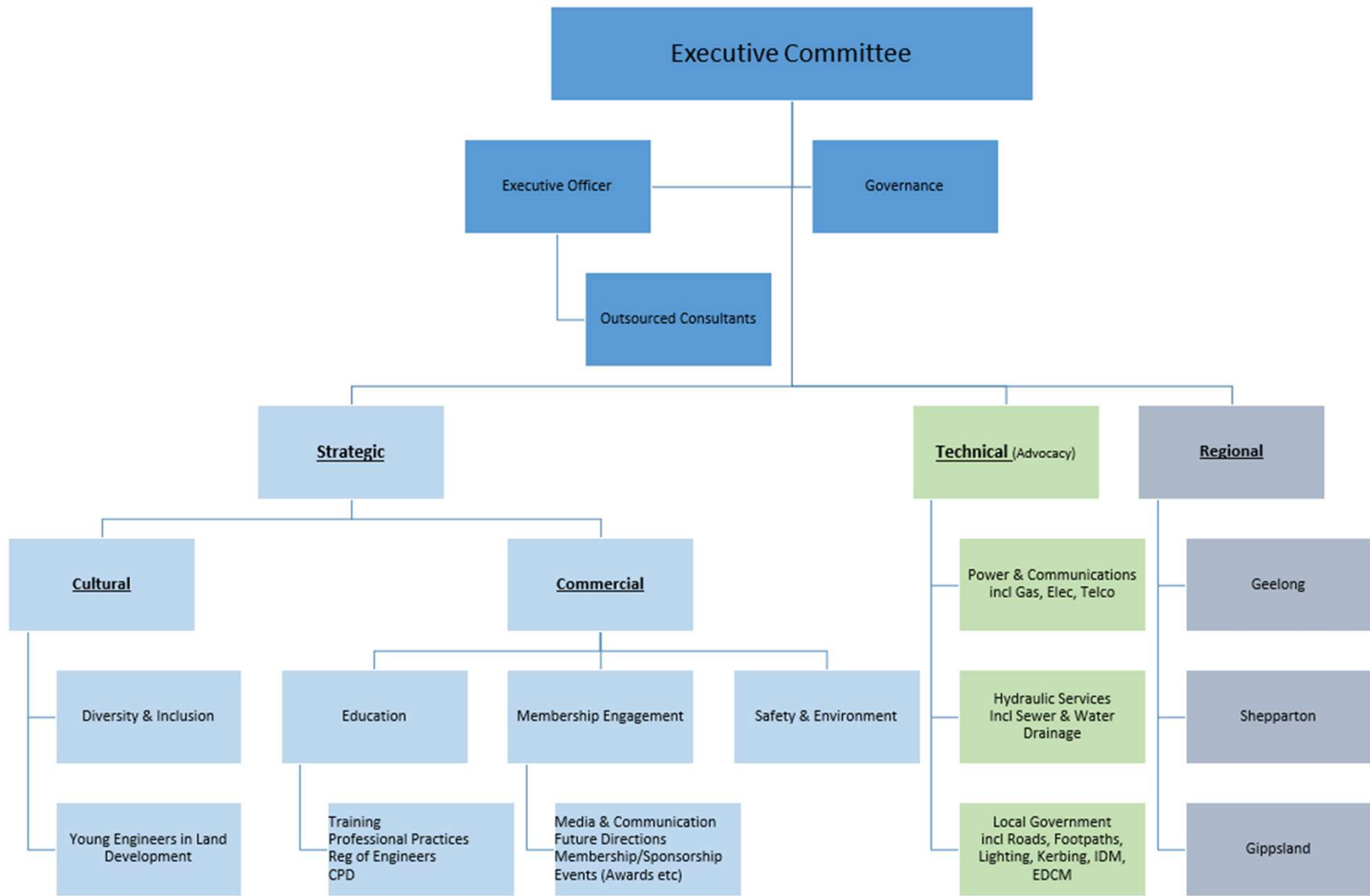
Snezana
Cutajar



Craig
Doubleday



Jamie
Tainton



ALDE Activity in March - May

- Conduit Monthly Newsletter
- April 19th Stormwater Victoria Victorian Urban Drainage Manual (VUDM) facilitated workshop
- May 1st ALDE/ Winslow Golf Day

- Updated South East Water Consultant Accreditation Deed
- MRWA registration of Engineers implementation
- Greater Western Water (GWW) Draft Eduction Controls Matrix
- CCTV Guidelines review with Baw Baw Shire

Tonight's Presentation



Val Mag, Principal, Stormy Water Solutions

Stormy Water Solutions was founded in 2003 by Valerie Mag after 12 years with the Melbourne Water Corporation and 3 years with Ecological Engineering Pty Ltd. As a recognised leader in her field, Valerie has successfully run the Stormy Water Solutions for 20-years.



Tonight's Presentation



David Hallett, CEO, IPWEA Victoria

The Institute of Public Works Engineering Australasia (IPWEA) is a professional association that is a technical society of Engineers Australia. IPWEA (Vic) is the Victorian Division of IPWEA, with members representing practitioners in state and local government as well as private industry.



Tonight's Presentation



Travis Shreeve
Senior Principal Environmental Consultant / Land Sector Lead

Travis Shreeve is a Senior Principal Consultant with over 17 years global experience in managing complex environmental, contaminated land and asbestos related projects, involving a diverse range of stakeholders in both the private and public sectors.



David Glover
Principal Geotechnical Engineer

David Glover is a Senior Associate Geotechnical Engineer with over 20 years' experience and he specialises in ground investigation design and management, development of ground models, slope stability analysis, foundation and retaining wall design, earthworks design, geomorphological mapping and mine workings assessments.

Upcoming events

Special Events

May 30

Fine Food & Wine

Sept 20

Annual General Meeting (general members only)

Oct 17

ALDE Awards for Excellence

Member Forums

July 12

Complimentary sub consultants, presentations by Adrian Cahill of RCPA (EkoPipe), & Karen Thompson of CPAA

Sept 13

Water Industry - SEW

Nov 8

Local Govt / Council / Vic Roads - CivilMart (Rocla) presenting

If you would like to present at a future event, please contact the ALDE office





Association of
Land
Development
Engineers

Association of Land Development Engineers

PO Box 3133, Nunawading Victoria 3131

P: 03 9876 6655 **E:** executive_officer@alde.com.au

11



alde.com.au