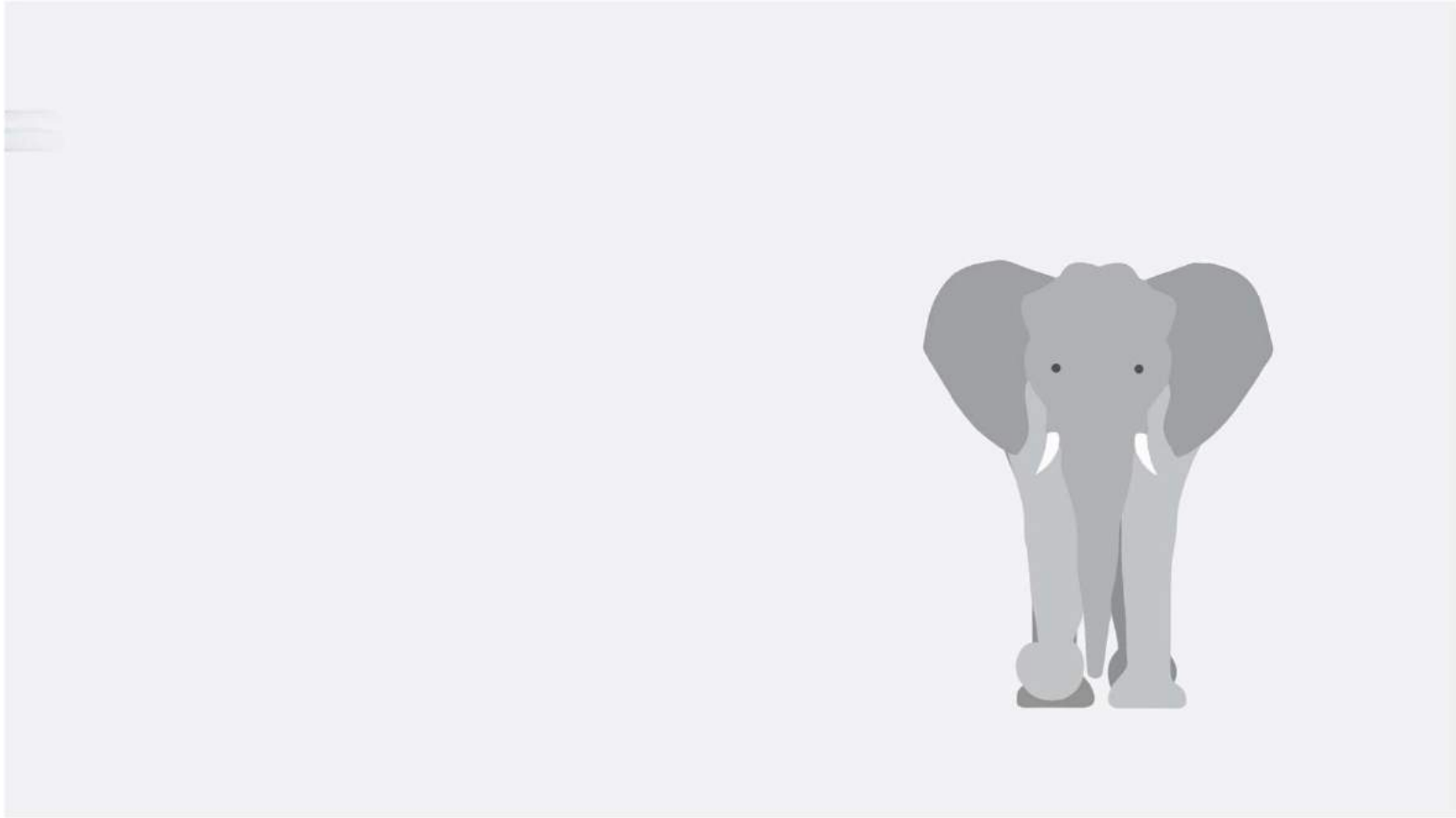


# EKOpipe



**BX3** MAKES ALL  
THE DIFFERENCE...

**RCPA** **EKO** PIPE



**BX3** MAKES ALL  
THE DIFFERENCE...

**RCPA** **EKO** PIPE

# DRY CAST CONCRETE PIPES

## Vertical Casting Process

- Zero (negative) slump concrete
- Low W/C ratio
- Unique workability requirements
- No finishing required



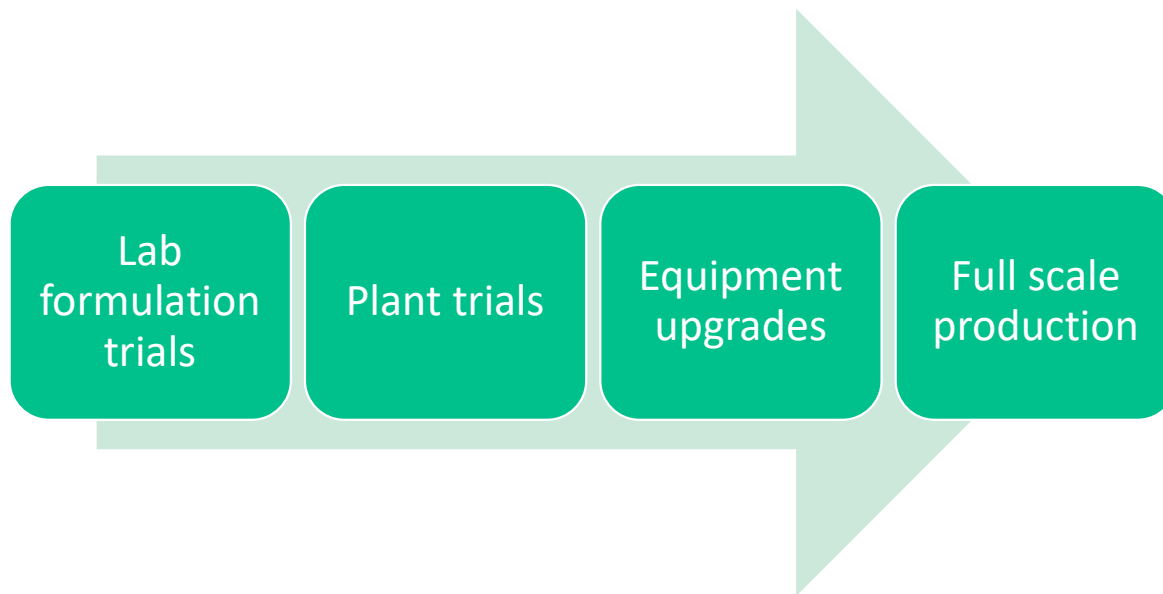
WHY?

**BX3**

**BX3** MAKES ALL  
THE DIFFERENCE...

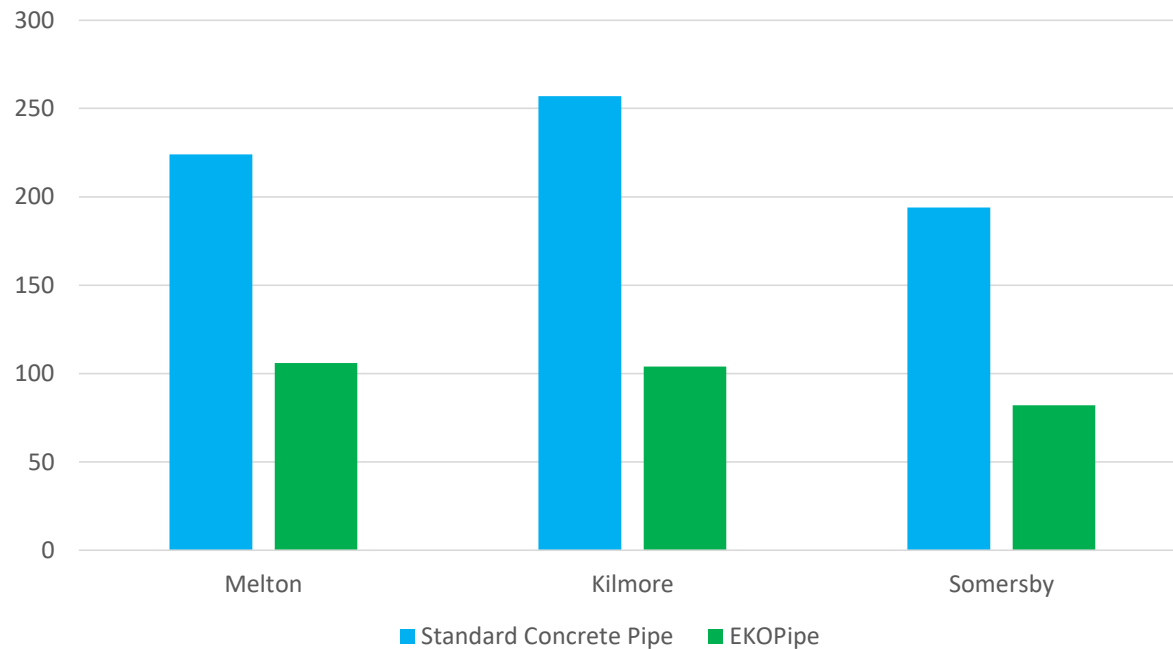
**RCPA** **EKO** PIPE

# DEVELOPMENT OF BX3 TECHNOLOGY



# SUSTAINABILITY

Concrete Emissions (kg CO2e per tonne)



>80%  
reduction in  
Portland  
cement

>50%  
reduction in  
concrete  
CO2e



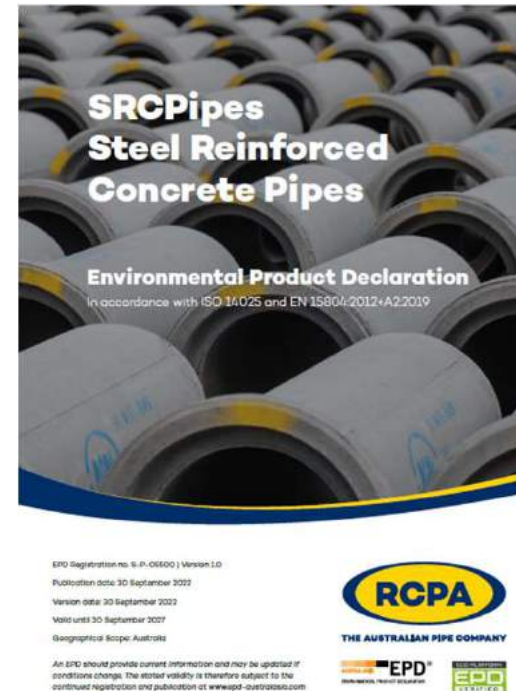
**BX3** MAKES ALL THE DIFFERENCE...

**RCPA** **EKO** PIPE

# SUSTAINABILITY

## The Future:

1. Standard concrete pipe EPD completed and in final review.
2. EKOPipe EPD to be developed in early 2023.
3. Future work = ongoing development to reduce CO2e.



**BX3** MAKES ALL THE DIFFERENCE...

**RCPA** **EKO** PIPE

# STRENGTH



**BX3** MAKES ALL THE DIFFERENCE...

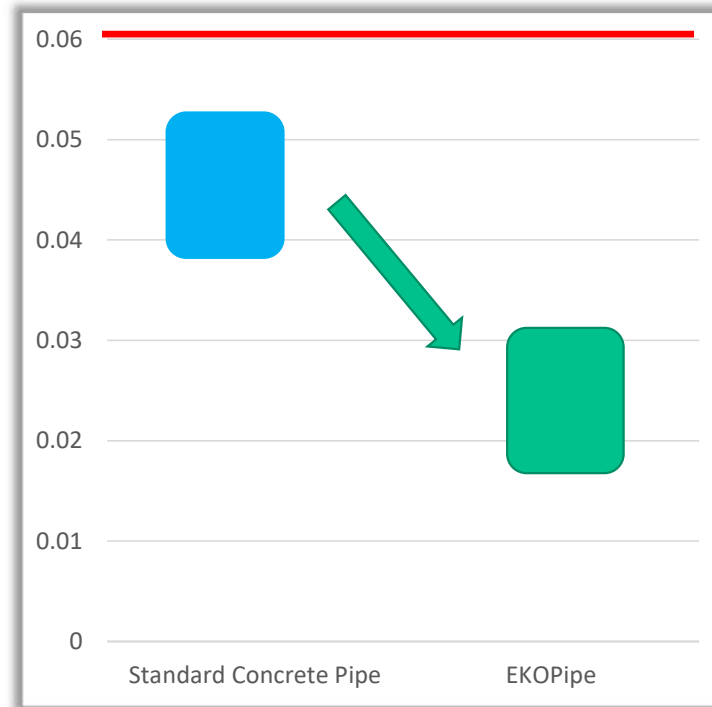
**RCPA** **EKO** PIPE



# DURABILITY



Water absorption test



**BX3** MAKES ALL THE DIFFERENCE...

**RCPA** **EKO** PIPE

Addressing the problem head on - Portland Cement, used to bind concrete, is energy intensive and contributes 8% of global CO<sub>2</sub> emissions. With over a decade of research and development, EKOPIPE, utilising our revolutionary new **BX3** technology, is here to change the future of our built and natural environment.

**80%**

**REDUCTION  
IN PORTLAND  
CEMENT USE\***

**>50%**

**REDUCTION  
IN CONCRETE  
CO<sub>2</sub> EMISSIONS#**

**>**

**EXCEEDS THE 2030  
COMMONWEALTH  
EMISSIONS TARGETS**

**=**

**EQUAL STRENGTH  
DURABILITY, AND  
SERVICE LIFE**



**LET'S  
ADDRESS THE  
ELEPHANT IN  
THE ROOM  
TOGETHER!**

\*Compared to Standard SRC Pipe

#Actual reduction in concrete pipe CO<sub>2</sub> emissions is determined by the pipe design

**BX3** **MAKES ALL  
THE DIFFERENCE...**

**RCPA** **EKO** PIPE